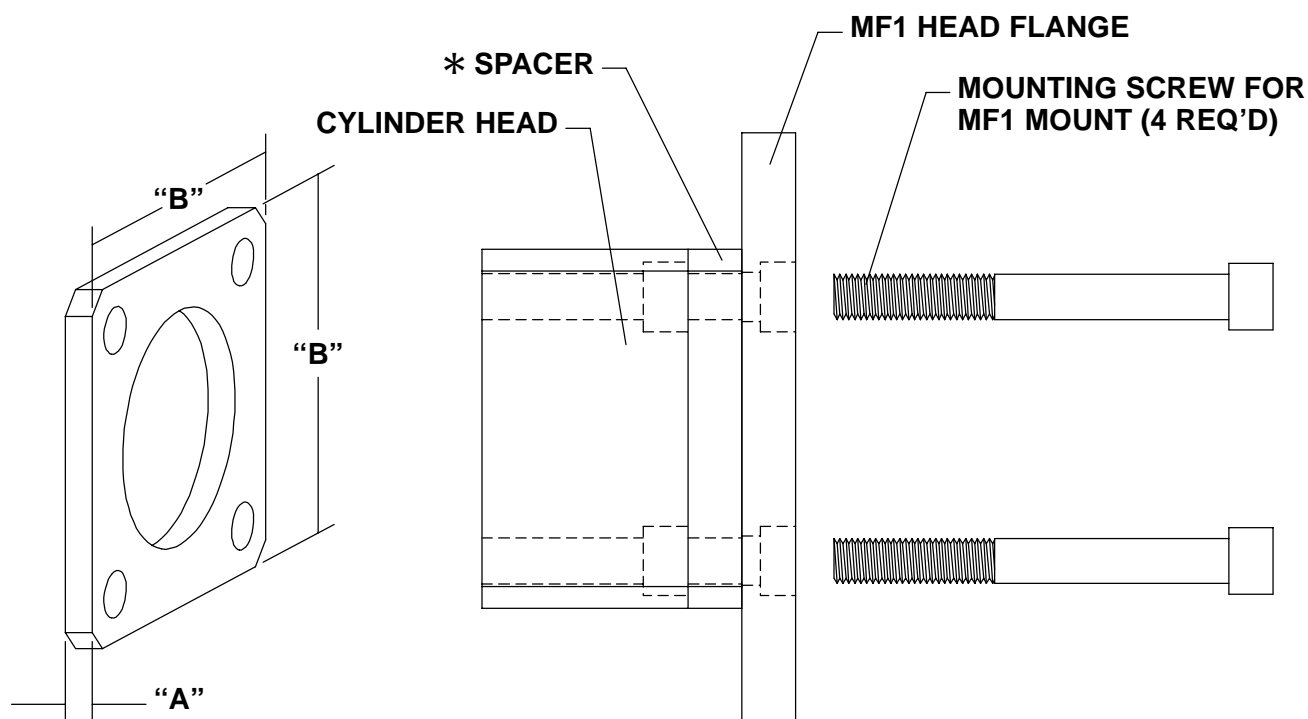


119577-() SPACER INSTALLATION



BORE SIZE	SPACER	"A"	"B"	CAP SCREW	TORQUE (FT LBS)
1-1/2"	119577-150	.375"	2.000"	1/4-28 x 2-1/4"	9
2"	119577-200	.375"	2.500"	5/16-24 x 2-1/4" (LOW HEAD)	16
2-1/2"	119577-250	.375"	3.000"	5/16-24 x 2-1/4" (LOW HEAD)	21
3-1/4"	119577-325	.625"	3.750"	3/8-24 x 2-3/4"	35
4"	119577-400	.625"	4.500"	3/8-24 x 2-3/4"	49

* WHEN USED WITH MF1 FLANGE, SPACER 119577-() IS MOUNTED BETWEEN HEAD AND FLANGE AND REQUIRES 4 MOUNTING SCREWS OF THE SIZE LISTED IN THE TABLE.

* WHEN USED WITHOUT MF1 FLANGE, SPACER 119577-() IS SLID OVER PISTON ROD AND BUSHING, AGAINST CYLINDER HEAD. NO NEW MOUNTING SCREWS ARE REQUIRED.

ARO

PN 119999-049

INGERSOLL-RAND COMPANY
ONE ARO CENTER • BRYAN, OHIO 43506-0151

☎ (419) 636-4242 • FAX (419) 633-1674

REV. 1-31-97

©1997 • PRINTED IN U.S.A.

INGERSOLL-RAND
FLUID PRODUCTS